

W E L C O M E N O T E

Some projects are more than just work — they become part of who you are. The Gala Production is exactly that for me. It's not just a project or a concept — it's a piece of my heart & vision, shaped by an endless days, sleepless nights and moments when passion overcame doubt.

Every detail, every choice, every line of this project was born from a desire to create something powerful, interesting & important.

A space that speaks of beauty, strength, and soul. A place where ideas turn into reality and moments into emotion.

This is more than project — it's a celebration of dedication, strength & courage of building something that matters, something that will last.

I'm honored to share it with you - A project that provides a platform for the business community to connect, present, and unite - Where you can discover and explore international brands, stay up to date with the latest trends, meet emerging talents and read their inspiring stories.

My note will be the reminder for you to Build your own legacy, follow your goals & To turn every challenge into success!



With Love & Respect,

Salomè

CEO & Creative Director

The tagline perfectly captures Pullman's unforgettable brand essence.

Vibrant and stylish Pullman Tbilisi Axis Towers dwells in the prestigious heart of Tbilisi, surrounded by retail and entertainment districts, 20 minutes' drive from Tbilisi International Airport. The hotel will offer 215 bedrooms and suites set on 19-35th floors in the landmark building of the city.

Boasting an ultramodern architecture, the hotel proudly offers a truly unique setting, Where business meets pleasure. 215 design-oriented rooms and suites, unrivalled meeting and event spaces, topmost restaurant & bar with stellar views – a hub to create, connect and tune out.



“OUR WORLD IS
YOUR PLAYGROUND”



The “Dumas” restaurant transitions its menus throughout the day and creates a buzz both inside and outside of the hotel. Sky Bar “Weather Report” stuns from the 37th floor with panorama of Tbilisi skyline complemented by delicious tapas and exquisite drinks from around the world.

Well-appointed, intelligently designed venues, spread over 2000 m2 provide natural daylight and a pleasant ambience for both business and social events. 7 meeting rooms, magnificent Ballroom and a spacious pre-function area with a terrace, complemented by tailored and intuitive service, perfectly combine to maximize guests' comfort and productivity.





DRIVE YOUR AMBITION

MITSUBISHI - HERITAGE AND FUTURE



Mitsubishi – Japanese pride, whose three diamonds are not only a visual symbol, but also a guarantee of multi-layered history and quality. The company’s 100+ year heritage is based on innovation, durability and human-oriented technology. Mitsubishi Motors has always been the choice of car enthusiasts for those who want reliability on difficult roads, strength in everyday life and true automotive spirit.





Mitsubishi Motors in Georgia

Reliability, durability and a customer-oriented experience. Mitsubishi's future is also being built in Georgia.

The only official Mitsubishi representative office in Georgia offers Georgian customers - a 5-year warranty with unlimited mileage - which further increases Mitsubishi's reliability.

"We offer our customers a time-tested brand, with

Japanese quality products and service that meets the manufacturer's engineering standards," - says Giorgi Amashukeli, Director of Mitsubishi Georgia.

Mitsubishi is known as a manufacturer of durable SUVs and pickups (Pajero, L200), which are indispensable even in difficult conditions. The brand is trusted by the military sector, state organizations, private companies and off-road enthusiasts.

In terms of flexibility and accessibility for the customer, "Mitsubishi Georgia" offers customers a test drive on all models; flexible financial terms with the involvement of banks and leasing companies and a Trade in program, which involves replacing an old Mitsubishi with a new one.

As the Mitsubishi Georgia team says:

The only thing that can replace a Mitsubishi car is a NEW Mitsubishi



A City Within A City

The Island By Ambassadorori Group



Batumi is the fastest-growing city in Georgia, particularly in terms of demography and tourism.

Ambassadorori Island Batumi is an innovative project in the Black Sea that involves the creation of two artificial peninsulas and one artificial island.

The project, spearheaded by "Ambassadorori Group," involves significant investment, with an initial phase requiring \$100 million USD and an overall potential of \$600 million USD. It includes various infrastructure components, such as hotels, residential apartments, a yacht club, and recreational spaces, aligning with sustainable development and smart city principles.

The Island represents a significant milestone in the Adjara region's unstoppable growth trajectory. Strategically positioned to become the region's new hub for tourism and economic activity.



AMBASSADORI ISLAND
BATUMI



American Comfort





Global Presence From Chicago to Tbilisi:

***Designing Homes
and Defining
Generations,
Almost a Century
of Comfort and
Craftsmanship!***

For nearly a century, Ashley HomeStore has held a leading position among the world's top furniture brands. Founded in 1945 in Chicago, Ashley has become the #1 furniture retailer in the United States and a global household name in home furnishings.

With over 1,000 stores in more than 160 countries, the brand's vast global presence is supported by 11 manufacturing facilities and 19 logistics centers. In Georgia, Ashley HomeStore opened its first showroom 6 years ago, and now operates four locations in Tbilisi and Batumi.







Ashley produces a full range of upholstered and wooden furniture, mattresses, and home décor, offering timeless American comfort for spaces of every size. Each showroom reflects Ashley's mission:

To make home design personal, practical, and beautiful.

“You choose the style – We create the space.”

Certain categories also offer customization options in color and size, allowing the final design to reflect the client's personality and preferences in every detail.

Ashley HomeStore is committed to constant innovation without compromising on quality — a brand where fresh ideas meet enduring craftsmanship.

“Constant innovation, Unchanging quality – This is what Ashley HomeStore is about!”



GIORGI DABRUNDASHVILI
GENERAL MANAGER



Beyond Design: Interior as Poetry, House with Soul

MEET THE MIND BEHIND THE MOOD - ANINIA PHKAKADZE – A DESIGNER WHO DOESN'T JUST CREATE BEAUTIFUL INTERIORS, BUT CRAFTS SPACES THAT TELL STORIES ABOUT THE PEOPLE WHO LIVE IN THEM.

How did you begin working in this field? What motivated you?

I have aspired to be a designer since childhood – only for fashion design. I loved drawing and sewing clothes for dolls. During the decisionmaking process, I ultimately decided to pursue interior design and test my abilities in that domain.

What do you consider the primary value of your profession?

An interior designer doesn't simply beautify a space—they make it more functional and tailor each zone to human needs. A truly successful design reflects the client's taste and identity in a coherent and harmonious way. Designers help clients avoid common mistakes,

unnecessary costs, and unsuccessful attempts. Ultimately, an interior designer integrates functional requirements, aesthetics, and emotional needs into a unified whole—this is one of the field's greatest values.

How do you approach trends? Do you follow them or maintain your own style?

I stay informed about trends, but I do not follow them blindly. I use them as information and inspiration.

What matters most is creating a space that endures over time in quality, style, and function. I strive to preserve individual vision and functional integrity. Each completed project is, in essence, my signature.

Where do you draw inspiration from? What is the

source of your ideas?

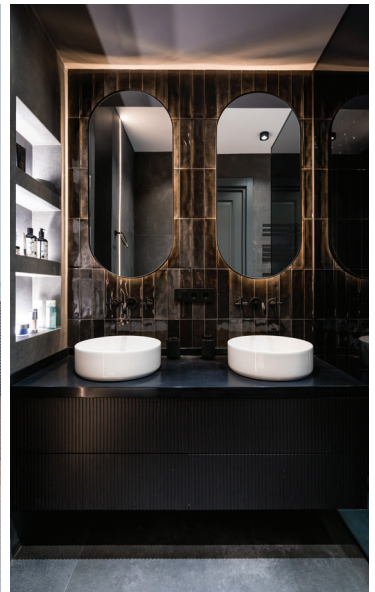
Inspiration can come from anything, including the client's personality and character. Sometimes, a building or a room itself speaks to you; lighting and architecture can spark creativity. Creating a space means transforming everyday life into a source of inspiration.

Colour, form, lighting: which do you consider first when starting a project?

All three are core components of interior design, and the emphasis depends on the project. Each influences mood and perception: colour sets the emotional tone, form establishes harmony, and lighting creates ambiance. For me, lighting is key—unifying colour and form to shape the final impression.



ANINIA PHKAKADZE
INTERIOR DESIGNER





What is your working relationship like with architects and contractors?

This is one of the most critical phases. Space must be coordinated with the architect—furniture layout, partition placement in a home or apartment. The contractor team must translate our vision into reality alongside the client. This process is vital and fascinating, as I learn a great deal during execution. Each new project represents a new challenge.

How important are ecofriendly materials and sustainable design to you?

The use of ecofriendly materials is growing daily, as people increasingly value environmental protection,

health, and sustainable living. Such materials create healthy, natural, and long-lasting environments. Naturally, I strive to use as many natural, ecofriendly materials as possible, viewing sustainability as a professional responsibility. Of course, the final choice always rests with the client.

What is the collaboration process like—from concept to final result?

This collaboration is multiphased, close, and methodical. Each stage aims to discover and understand the client's desires and needs, and to transform them into visual and functional reality. The client is involved at every step—layout planning, material selection, design decisions, and so on. The more

open the client is, the better I can comprehend and meet their needs.

How do you connect your designs to the client's personality, and what do you consider in your interactions with them?

Certainly, my goal is to create spaces that are not only functional and aesthetically pleasing, but also expressive of the client's character, lifestyle, and values. During the initial meeting, I always ask specific questions to uncover their preferences and desires—for example, which colours they like or which shades make them feel at ease. A designer must be able to interpret the client's wishes and translate them into reality.

Create natural beauty with Benostone!

The Benostone factory in Mtskheta is not only a space for stone processing, but also a place for transforming materials into perfect forms. Stone blocks are processed using modern and high-tech equipment. Each piece is cut to the optimal dimensions tailored to the needs of the project.

Innovative processing technologies determine quality and efficiency.

Benostone has been successfully operating in the Georgian market for 10 years and offers its customers a wide selection of natural stone.

The company specializes in the import and sale of natural stones. The products include materials such as: marble, granite, travertine, onyx, traonyx, quartz, porcelain and others. Each stone is selected for its high quality and aesthetic value, which ensures its diverse use for both indoor and outdoor cladding.



BEHZAD YADOLLAH
FOUNDER/CEO



KHATIA TSINARIDZE – FACTORY MANAGER



**Natural
stone – a
prerequisite
for creating a
sophisticated
interior**



SHAHROOZ SMAIL ZADE - CHIEF MECHANIC OFFICER

NINO MODREKELIDZE

INTERIOR DESIGNER WITH SIX YEARS OF PRACTICAL EXPERIENCE

From Ideas to Reality

Personality Reflected in Interior



„Over the past six years, I have had the opportunity to work on both: residential and commercial projects. My goal in every space is to create an environment that

resonates with the client's lifestyle, taste and needs. I believe that even the smallest detail can either enhance or disrupt the harmony of a space. That's why I prioritize

designing functional and harmonious interiors tailored to each client's individual requirements.

I draw inspiration from everyday life — from



architecture, nature, art, travel, or even a simple conversation. Often, ideas emerge through collaboration. In many ways, interior design is a dialogue

between people and their spaces, and we, as designers, serve as the mediators in that conversation.

One of my greatest achievements is seeing a

satisfied client — witnessing how a well-designed space can truly improve someone's daily life and enhance their sense of comfort" — **says Nino in a conversation with Gala.**





Contact Information:

+995 533 33 44 97

ninimodrekelidze@gmail.com

A TRULY UNIQUE RESORT IN GEORGIA

SAIRME



Tucked away in the forested mountains of Georgia's Imereti region, 950 meters above sea level, Sairme is more than a destination — it's a sanctuary where nature, wellness, and heritage come together in perfect harmony. Famous for its healing mineral springs, fresh mountain air, and breathtaking scenery, Sairme holds a unique place on both the national and international stage.

First recognized as a resort in 1930, Sairme's original hotel buildings were constructed between 1963 and 1970. A transformative rehabilitation project launched in 2011 and was completed by 2018, breathing new life into the resort while preserving its soul. From the iconic mosaic-covered walls to the naturally flowing spring waters, Sairme's authentic charm remains untouched.

The resort's restored mineral water pump rooms,

positioned directly at the spring sources, offer guests the chance to experience waters long celebrated for their health benefits. Rich in essential minerals, Sairme's waters are recommended for a wide range of conditions — from digestive and urinary issues to endocrine and circulatory disorders.

Wellness is at the heart of the Sairme experience. The Thermal Spa and Wellness Center offers over 80 revitalizing procedures using





thermal water. Outfitted with cutting-edge equipment from Germany's Kraft, the center provides tailored treatments that promote recovery, rejuvenation, and relaxation. Sairme is proud to be the only resort in Georgia and the Transcaucasia region to hold membership in the prestigious European Spa Association (ESPA) — earning its "Best Innovative Project" award in 2021.

But Sairme is also a place of excitement. Adventure seekers can soar across an 800-meter zipline above the

lush Sairme valley or test their aim at the professional shooting range, where clay targets challenge guests from five positions. Horseback riding, compact sporting, and bike rentals offer more ways to explore the area's natural wonders.

Business travelers find inspiration here as well. With four fully equipped conference halls, Sairme is an ideal setting for corporate retreats, seminars, and team-building sessions, far removed from the routine of city life.

The resort's excellence has been recognized by multiple international and local awards. Between 2020 and 2024, it was named Best 4 Seasons Mountain Hotel by Welcome to Georgia. In 2020, it received the World Travel Award for Georgia's Leading Resort. In 2024, it was further honored with the Leader of the Year award by the Swiss Rating Association and the Best Innovative Resort Therapy award at the Med Award 2024, organized by the Georgian Medical Tourism Group (GMTG).



Sairme continues to evolve — blending centuries of healing tradition with the latest in modern medical wellness. Sairme is not just a place — it's a journey. A journey into wellness, nature, and authentic Georgian hospitality. Whether you're seeking a restorative retreat, an active adventure, or a bit of both, Sairme awaits — ready to greet you with genuine warmth, flowing springs, and endless possibilities.



Experience Exceptional Hospitality at Kvareli Lake Resort



KVARELI LAKE
RESORT





Situated in the heart of Georgia - Kakheti region. Kvareli Lake Resort offers a luxurious sanctuary for travelers seeking comfort, adventure, and cultural discovery. Known as Georgia's wine-making hub, Kakheti boasts lush vineyards, historic churches, and breathtaking vistas that provide a stunning backdrop for an authentic escape.

The resort features two elegant buildings housing with 100 well-appointed rooms designed for relaxation and comfort. Guests can indulge their palates at our two on-site restaurants—one dedicated to traditional Georgian cuisine and the

other serving a variety of European dishes—catering to diverse tastes and preferences.

For leisure and recreation, the resort presents a range of pleasing activities including water bicycles and boat rides, perfect for exploring the peace of Kvareli Lake. Guests can also enjoy biking through scenic trails or visit our comprehensive spa, which offers wellness treatments, indoor and outdoor pools, and sauna facilities.

Additionally, we can organize guided excursions to nearby attractions such as vineyards, ancient churches, and other cultural sites, allowing visitors to immerse themselves in Kakheti's rich history and vibrant traditions.





Whether your goal is adventure, relaxation, or cultural exploration, Kvareli Lake Resort provides an unforgettable experience amid some of Georgia's most captivating landscapes.

*Kvareli Lake Resort —
exceeding expectations at
every turn!*

Legacy Isn't Given. It's Built! Start With A Glass Of Rtvelisi.



Our story begins long before Rtvelisi was officially established. It can be traced back to 1920, when a historic patriarchal cellar.

The inspiration for Rtvelisi was born during the harvest season a time of celebration. Our name itself is a homage to the Georgian tradition of "Rtveli" the sacred act of grape picking, an 8,000-year-old ritual that binds our people to the land.

Rtvelisi is not just a name, it is a promise. In both Georgian and international markets, we are dedicated to producing wine of the highest standard, distinguished by their exceptional taste and character. From the very first day, we set out with a clear purpose: to craft wines of

uncompromising quality and unforgettable taste, carrying Georgia's winemaking heritage into the future.

Rtvelisi is more than a winemaking company, it is a tribute to Georgia's centuries-old tradition of culture, where every grape tells a story, and every bottle carries the essence of our land, so it was born from the sun-drenched vineyards of Kakheti.

Our passion for excellence and respect for tradition shape everything we create from classic wine to Sparkling, Brandy and Chacha.

Spread across 250 hectares, our vineyards are located both in unique micro-zones of Kakheti and in more traditional vineyard areas.

We cultivate Rkatsiteli, Saperavi, Kisi, Kakhuri Mtsvane and other classic Georgian grape varieties. With each passing season, we continue to expand & explore to bring the most authentic wines to our partners and customers.

Rtvelisi is located in Telavi, where the ideal altitude ranging from 550 to 880

meters above sea level creates the perfect conditions for cultivating world-class wines. This unique location, shaped by the Caucasus Mountains and the Alazani Valley, allows us to produce wines that are

both distinctive and deeply expressive of their origin.

Every sip tells a story, and every bottle carries the heart of our land.

Rtvelisi's dedication to excellence has been recognized worldwide. Honored in some of the most prestigious international wine competitions, including:

- Decanter World Wine Awards
- Mundus Vini
- International Wine & Spirit Competition (IWSC)
- London Spirits Competition
- International Wine Challenge
- Interwine Grand Challenge
- Hong Kong International Wine Challenge
- Gilbert & Gaillard International Challenge

Rtvelisi continues to grow as a globally recognized brand. Rtvelisi wines are now enjoyed in 24 countries around the world ! An achievement that reflects our dedication to bringing the taste of

Georgia - From Europe to Asia and North America. The brand is reaching the new markets & strengthening our international presence.





Hospitality at Its Finest: Beyond Service, Excellence In Every Detail



HSC Group Hospitality was established in 2016 and provides professional services for hotel project consulting, project management, pre-opening, opening and general management. Company incorporates experienced professionals from various fields of hospitality industry, who previously worked in international 5star brand hotels and other high-class local hotels and restaurants.

HSC Group Hospitality is a partner of Switzerland based international and award-winning Consulting and Management Company – **DEVPORT GmbH**. The partnership combines the extensive

international experience with the particularly needed local knowledge, thereby impacting corporate performance by providing outstanding expertise.

HSC Group Hospitality provides real-world perspectives and value-enhancing solutions for customers. With hand-on hospitality development services including hotel project management, pre-opening, opening and general management, asset management and capital market services, we enable strategic solutions that achieve maximum benefit giving our clients a competitive advantage.

We oversee and drive multi and individual site operations in alignment with organizational goals and objectives and increases revenues, average daily rate (ADR), gross operating profit (GOP) and revenue per available room (RevPAR), as well as owner, guest and employee satisfaction with highly effective and culturally sensitive management and Sales & Marketing efforts, leading to long term success. We call it measurable excellence based on real world experience, and we can proudly say that we have an unbroken track-record in achieving outstanding results, anywhere, anytime.

Best Regards

Giorgi Dolidze

HSC Group Hospitality
CEO

Tel: +995 599 50 98 98 | E-Mail: george@hscgroup.ge

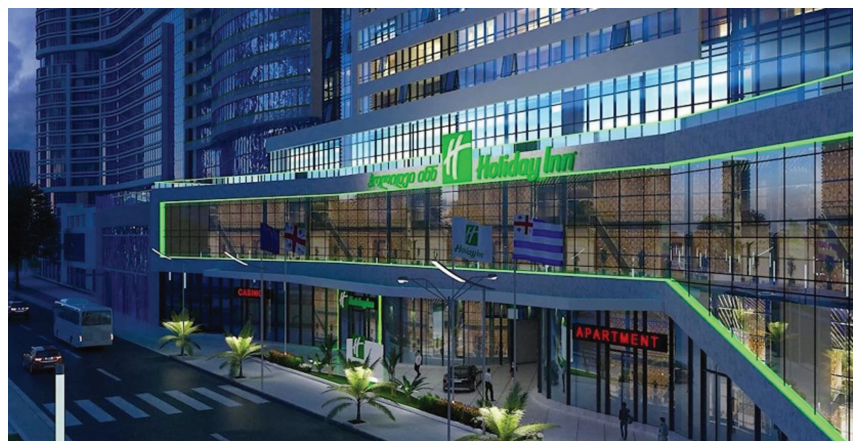
Web: www.hscgroup.ge | Facebook: [hscgroupgeorgia](https://www.facebook.com/hscgroupgeorgia)

Stay Tuned: Holiday Inn Resort Batumi & Blue Sky Tower Is Coming...

Batumi News: The first **Holiday Inn Resort** in the Adjara region will open in the BLUE SKY TOWER multifunctional complex. The global brand is included in the Blue Sky Tower project of the development company "Like House". The hotel will have 150 high-class rooms and will offer guests various outlets and high-level services, such as an indoor pool, conference spaces, a restaurant, a terrace, a children's zone and various spaces.

BLUE SKY TOWER - a residential complex on the Black Sea coast, consisting of two blocks. BLOCK A - an international brand hotel HOLIDAY INN Resort and 800 apartments. Block B - residential apartments. The total investment in Bluesky Tower is 200 million GEL. The 200 million GEL project consists of two blocks.

"So far, We have Holiday Inn and Holiday Inn Express in Georgia, but Holiday Inn Resort has not opened yet. Holiday Inn is a step up from the Express hotel, equivalent to more business-



The complex will open in 2025!

class facilities, while Resort is a 5-star facility, featuring unusually large spaces, recreational areas, a large-scale pool, conference halls, entertainment areas, a variety of restaurants, etc. **Construction prices increase once a quarter,**

and accordingly the selling price increases. I do not think that anything will happen in the coming years that will reduce the price. In my opinion, it will increase by at least 5-7% annually," says Giorgi Dolidze.

Home2 Suites by Hilton & Lagoon Resort Batumi..



Lagoon Resort consists of three blocks and various resort-type infrastructure, such as a gym, workspace, children's zone, indoor and outdoor pools, covered parking, etc. In the near future, it is planned to introduce an international hotel brand to the 'A' block of the project, which will add even more value to the entire complex.

"You know that there are no free territories in the central part of Batumi, so our project **Lagoon Resort** is being built on the airport side, which is characterized by low-rise development and more in line with the resort type. *This will be the largest hotel chain. This brand has not entered Georgia yet, nor the Transcaucasia. This also shows that it is worth entering into and forming future partnerships with specific investors.*" says Giorgi Dolidze.

